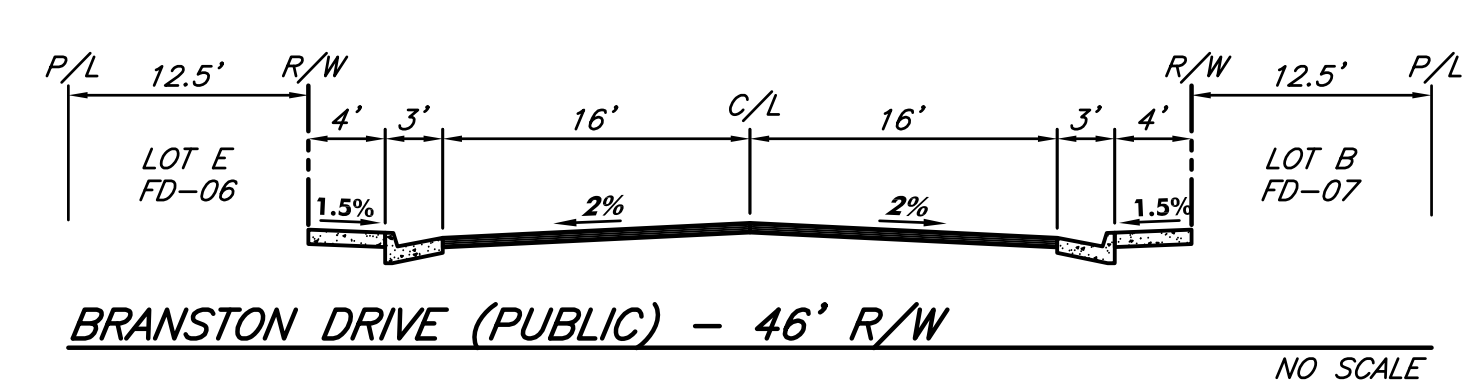


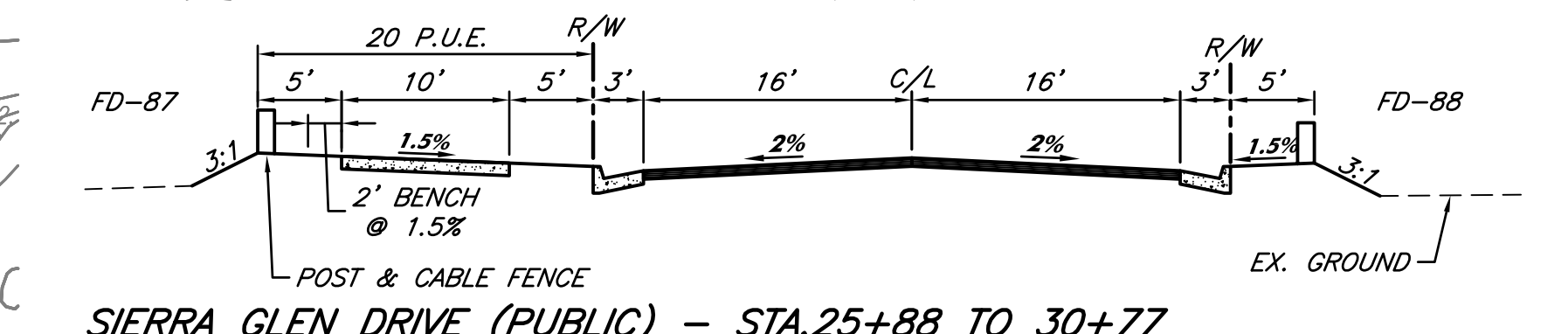
TYPICAL GATED ENTRY
NOT TO SCALE



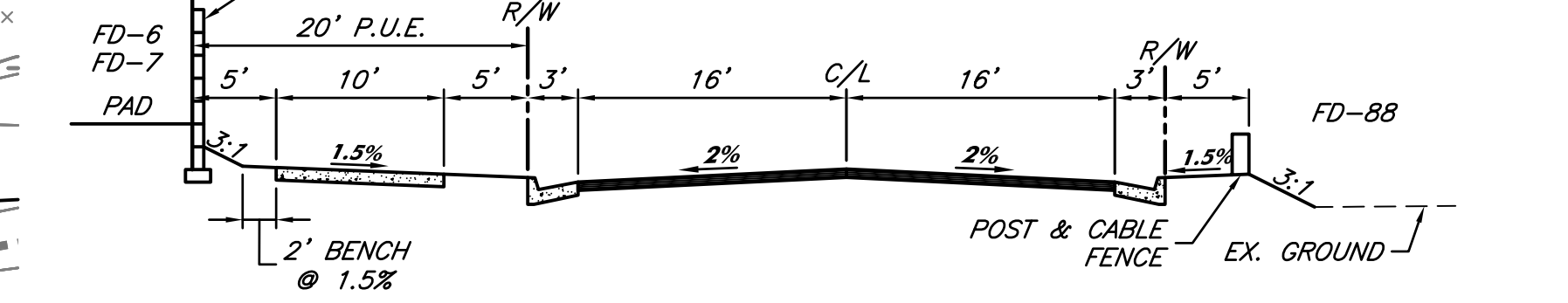
BRANSTON DRIVE (PUBLIC) - 46' R/W
NO SCALE



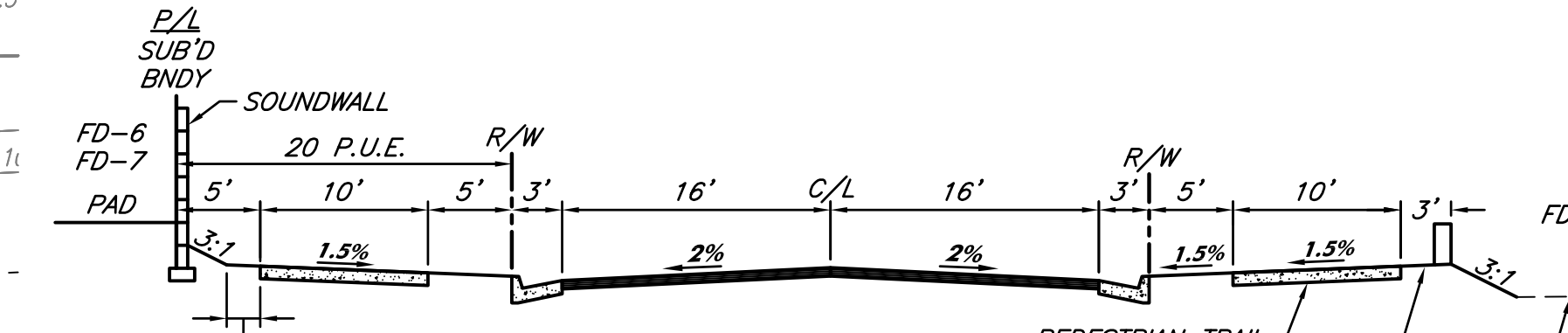
TYPICAL SECTION 38' RESIDENTIAL STREET (PRIVATE)
NO SCALE



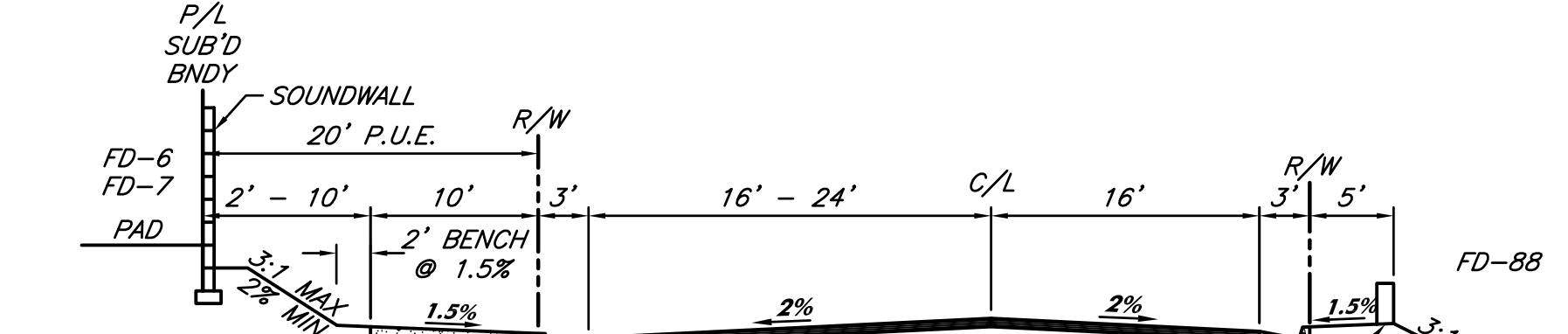
SIERRA GLEN DRIVE (PUBLIC) - STA. 25+88 TO 30+77
NO SCALE



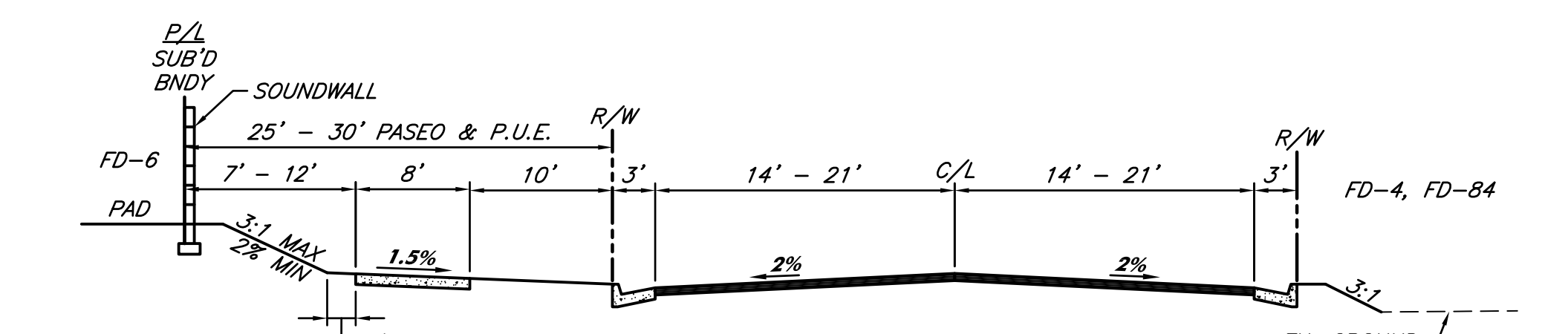
SIERRA GLEN DRIVE (PUBLIC)
STA. 30+77 TO 33+30, 36+28 TO 39+15,
40+10 TO 48+27, 51+00 TO 55+20
NO SCALE



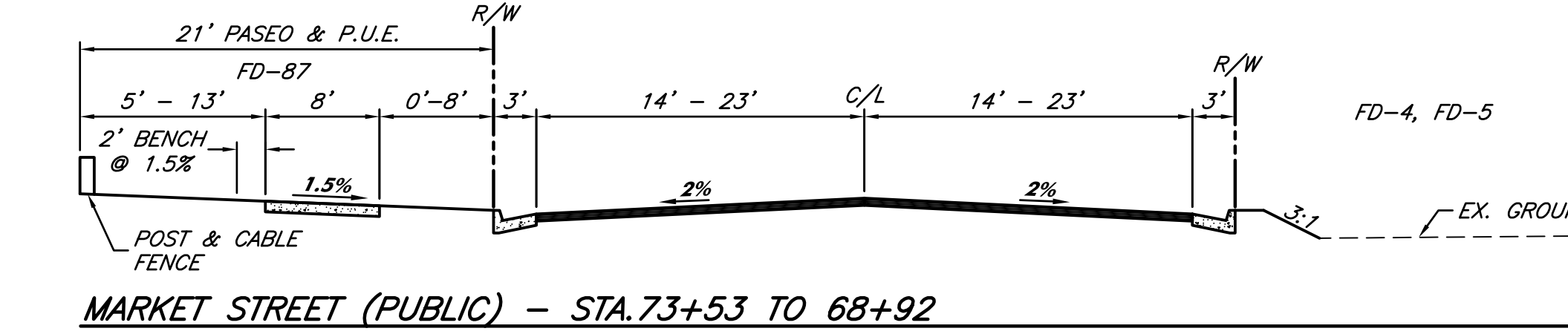
SIERRA GLEN DRIVE (PUBLIC) - STA. 36+60 TO 39+40
NO SCALE



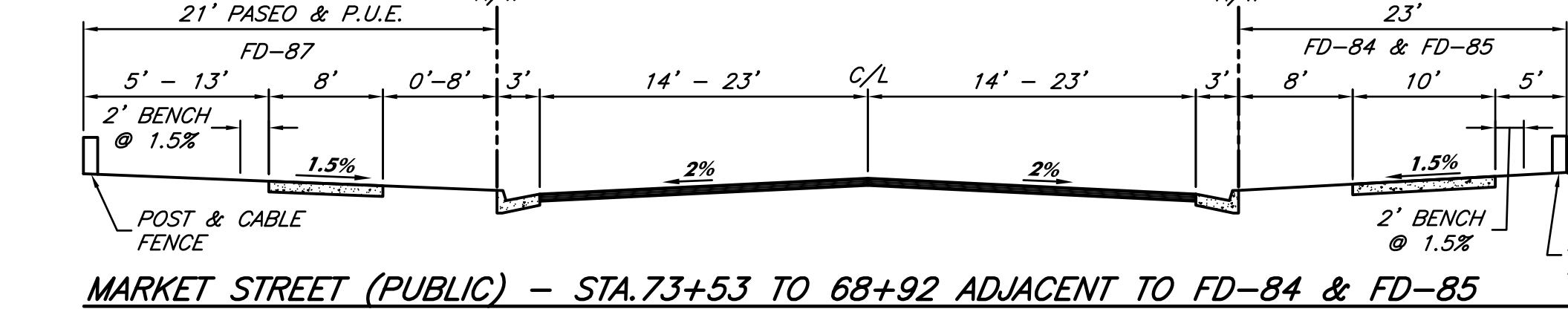
SIERRA GLEN DRIVE (PUBLIC)
STA. 34+58 TO 36+28, 49+50 TO 50+50
NO SCALE



MARKET STREET (PUBLIC) - STA. 78+30 TO 73+53
NO SCALE



MARKET STREET (PUBLIC) - STA. 73+53 TO 68+92
NO SCALE



MARKET STREET (PUBLIC) - STA. 73+53 TO 68+92 ADJACENT TO FD-84 & FD-85
NO SCALE

- NOTES: LETTERED LOTS**
- LOT A PRIVATE ROAD TO BE DEDICATED IN FEE TO THE HOME OWNERS ASSOCIATION AND AS A P.U.E. FOR ALL UTILITIES EXCEPT STORM DRAIN TO THE CITY OF ROSEVILLE.
 - LOT B PRIVATE LANDSCAPE AREA TO BE DEDICATED IN FEE TO THE HOME OWNERS ASSOCIATION.
 - LOT C PRIVATE LANDSCAPE AREA TO BE DEDICATED IN FEE TO THE HOME OWNERS ASSOCIATION.
 - LOT D PUBLIC LANDSCAPE STRIP TO BE DEDICATED AS AN I.O.D. IN FEE TO CITY OF ROSEVILLE.
 - LOT E PUBLIC LANDSCAPE STRIP TO BE DEDICATED AS AN I.O.D. IN FEE TO CITY OF ROSEVILLE.

